

# Installation for Windows

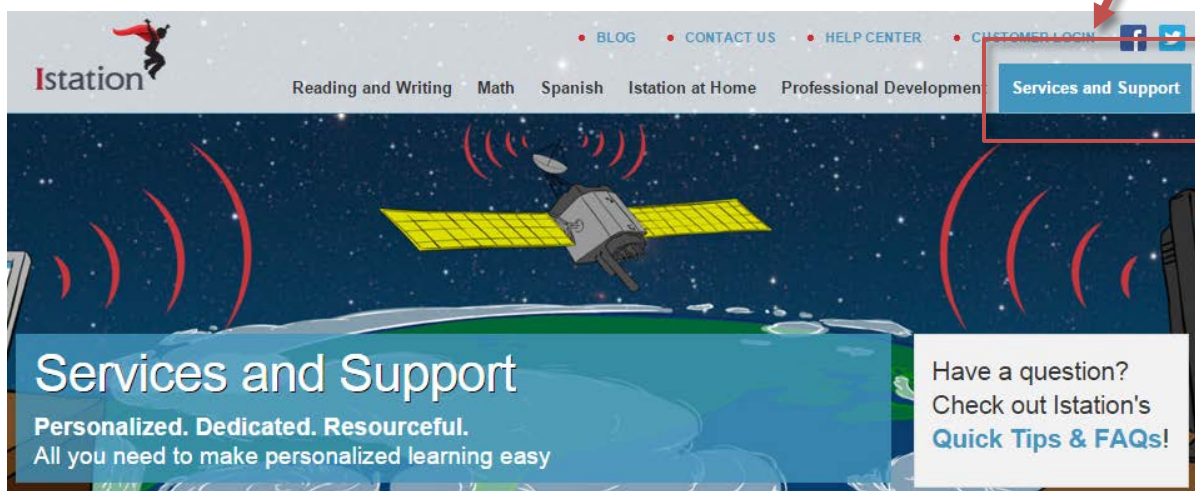
Use the following instructions to install Istation on computers that meet the Windows system requirements (to view the system requirements, visit <http://www.istation.com/Support#technical>).

If there is a security or write protection program on the computer, follow the protection program's instructions for disabling the program before installing. Istation requires a persistent folder on the hard disk that allows students to read, write, and execute. Programs that inhibit this operation, such as Deep Freeze or Clean Slate, must be configured to permit Istation to save data to its folder.

\*Istation also offers an MSI package for remote deployment, available [here](#).

**NOTE:** You must be logged in with Administrator credentials when installing Istation.

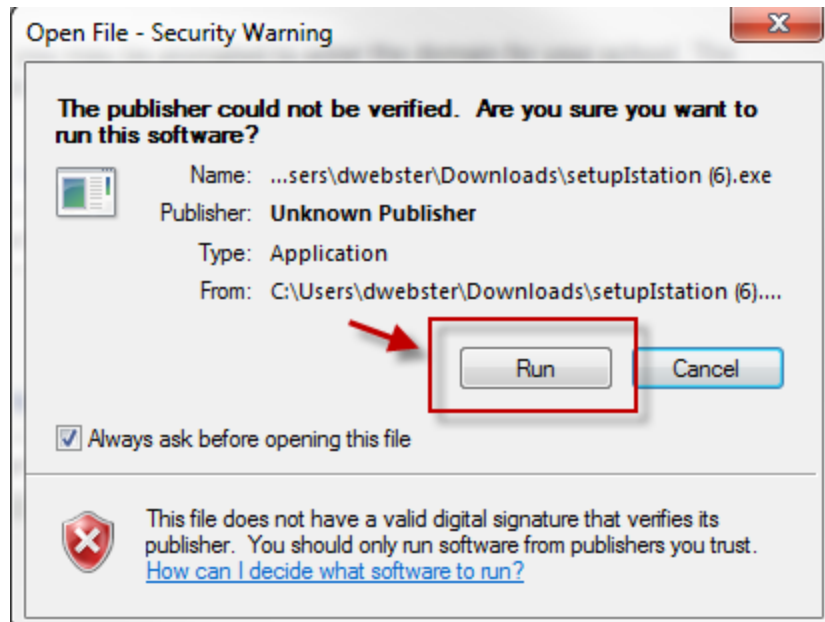
1. Go to [www.istation.com](http://www.istation.com).
2. Click the **Services and Support** tab in the top right.



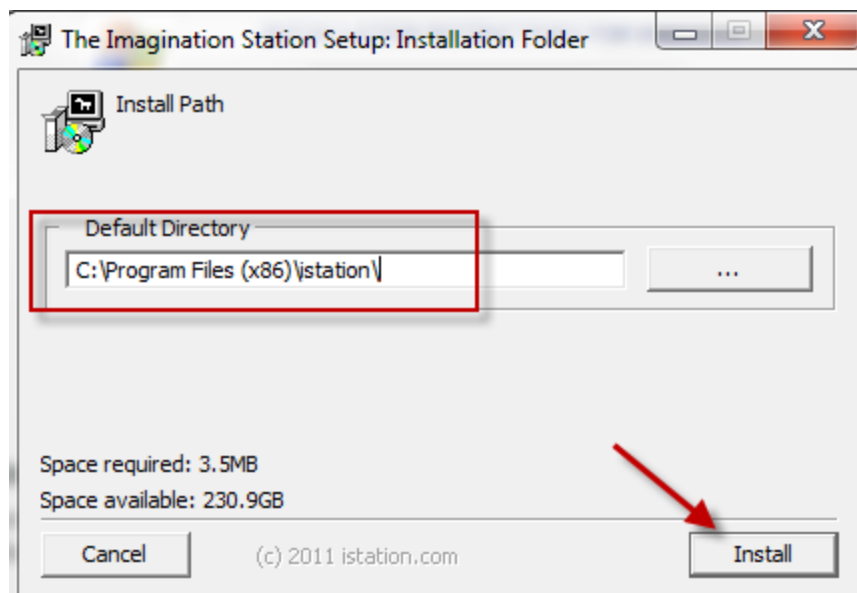
3. Scroll down the page and click the blue **Download: Istation for Windows** button.



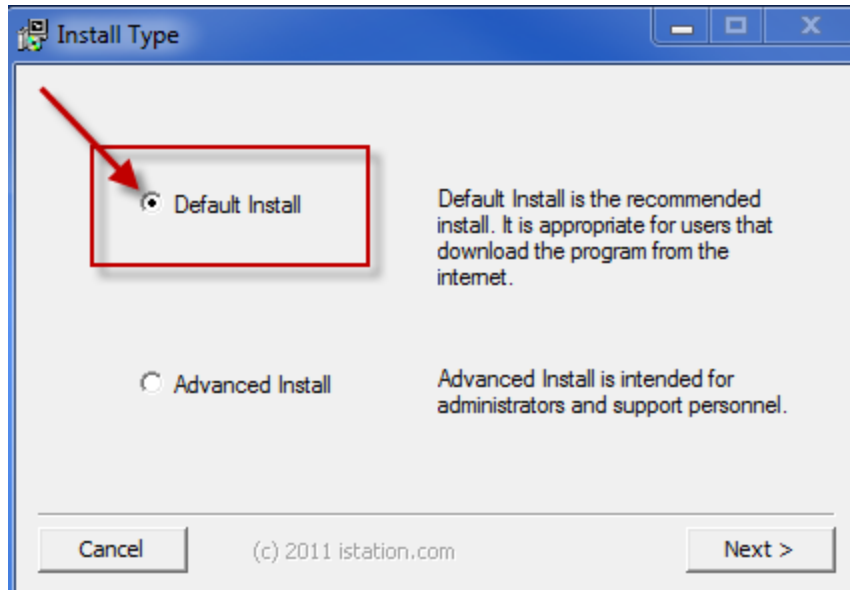
4. Click **Run** or **Open**.



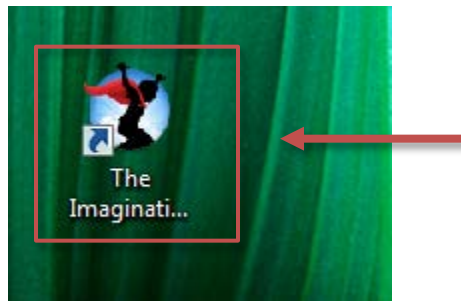
5. Click **Install** to accept the Default directory.



6. Click **Next** to accept the Default installation.



7. The program should run automatically. If not, minimize the website and click on **The Imagination Station** icon to start.



8. Type your school domain in the **Default Domain** box, if it is not automatically supplied.
  - a. If you do not know your domain, you may search for it by typing the name of your school.
- NOTE: Do not type in the **Peer Group** area.
9. Click **OK**. The application will automatically restart.

**Configuration**

Istation software needs to be configured to run on this computer. Please type the name of your school in the domain field below, and select the matching domain name from the list of options.

If you need assistance, please contact Istation Technical Support at 866-883-7323 ext. 2 or via e-mail at [support@istation.com](mailto:support@istation.com)

Default Domain

Domain:  Peer Group (optional):

Active Peer Groups. [Refresh](#)

10. If installing on multiple computers, leave the application running while you install other computers on the network by repeating the steps above. This will allow installations on other computers to skip step 9 and automatically configure the domain information.

Students, teachers, and administrators can now log in using this icon to access the student application. Remember, teachers and administrators will want to log in to the Istation website ([www.istation.com](http://www.istation.com)) to manage any classes or data.

If you need help identifying the Default Domain, or for any other information, contact Istation Support Services at 866-883-7323, ext. 2 from 7:30 a.m. to 6:30 p.m. (CT) Monday through Friday or email [support@istation.com](mailto:support@istation.com).